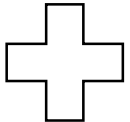


Chinese Wilderness Map

4.3%

12.4%

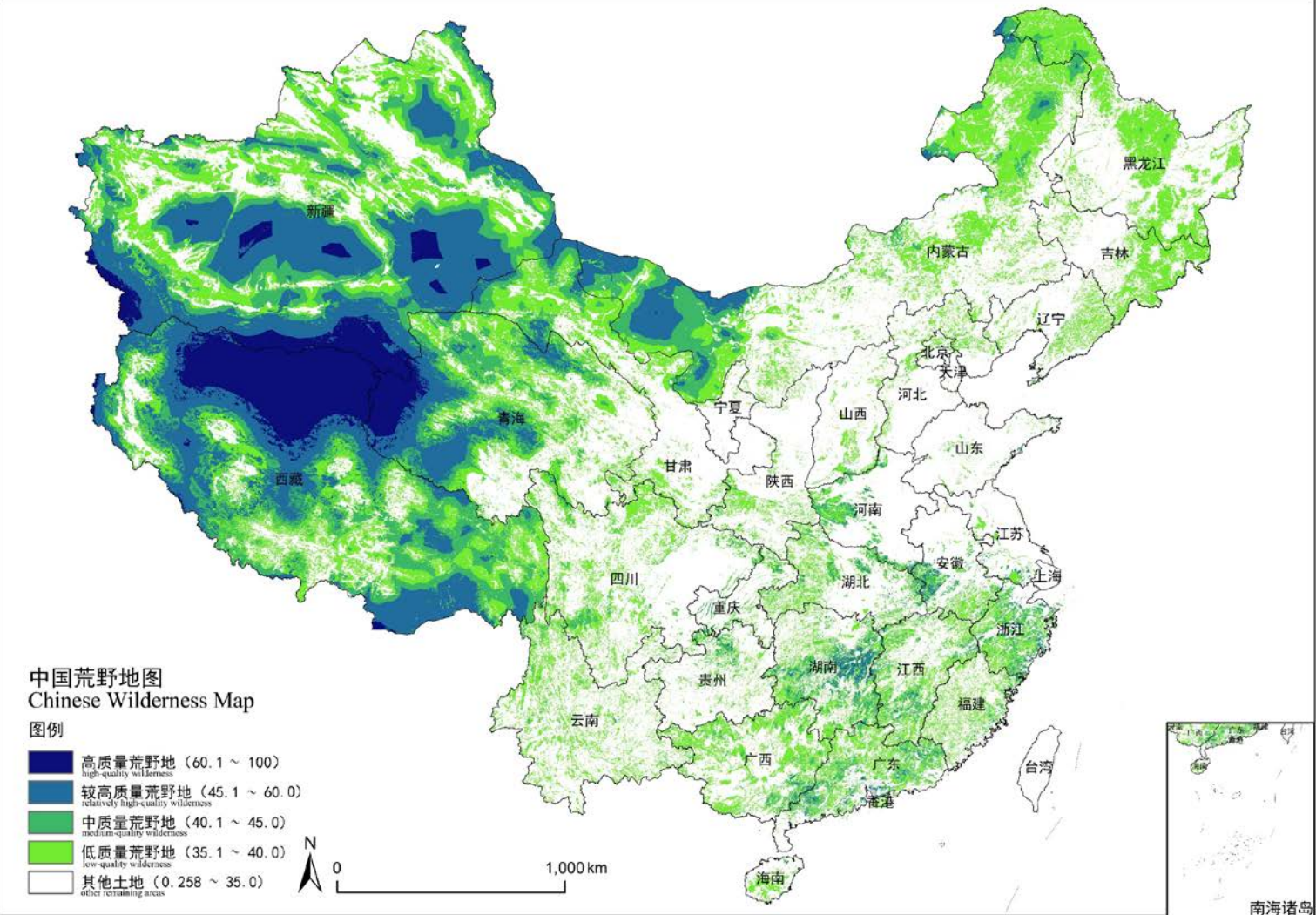
11.9%



24.0%

52.6%

Nature Needs Half in China !



Reference: 曹越, 龙瀛, 杨锐. 中国大陆国土尺度荒野地识别与空间分布研究[J]. 中国园林, 2017, 6: 26-33. CAO Yue, LONG Ying, YANG Rui. Research on the Identification and Spatial Distribution of Wilderness Areas at the National Scale in Mainland China [J]. Chinese Landscape Architecture, 2017,6: 26-33.

- ▣ This study presents the first wilderness map for the continental areas in mainland China using a resolution of one square kilometer measuring unit.
- ▣ The five categories assigned including the high-quality wilderness, relatively high-quality wilderness, medium-quality wilderness, low-quality wilderness and other remaining areas, are respectively taken up to **4.3%**, **12.4%**, **11.9%**, **24.0%** and 47.4% of the total continental areas of China.